

Portable

Canvio Basics 2022

Storage Made Simple.



4 2 1
TB TB TB

Color 

- ? 2.5" external hard drive
- ? Matt finish
- ? SuperSpeed USB 3.2 Gen 1
- ? USB-powered

Quickly transfer files with SuperSpeed USB 3.2 Gen 1 and store up to 4 TB of data on Canvio Basics external hard drives. These devices are ready to use with Microsoft Windows and require no software installation, so it couldn't be easier to start storing all of your favourite files. Whether at your desk, or on the go, its timeless design with the matt finish means it'll always look good. What's more, the hard drive also allows you to connect to older hardware, with USB 2.0 compatibility.



Manual

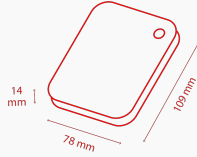
[Canvio-Basics_UM_221024.pdf](#) ?

Tools

[ToshibaStorageDiagnosticTool_1.30.8920.zip](#) ?



Product Specifications



Basic Specifications

Interface	USB 3.2 Gen 1 (USB 2.0 compatible)
Max. transfer rate	~ 5.0 Gbit/s
File system	NTFS (MS Windows) Requires reformatting for Mac OS
Power	USB bus power (max. 900mA)
System requirements	Formatted NTFS for Microsoft® Windows® 11, Windows® 10, Windows® 8.1 One free port of USB 3.2 Gen 1 or USB 2.0 Requires reformatting for macOS v13.0 /v12.6.1 / v11.7.1 / v10.15 / v10.14 / v10.13

Box Content

Box Content	Canvio Basics USB 3.2 Gen 1 cable (Type A to Micro-B) User's manual (pre-installed on the hard drive)
--------------------	---

Physical

Weight (approx.)	1 TB, 2 TB: 149 g 4 TB: 217,5 g
Dimensions	1 TB, 2 TB: 78 x 109 x 14 mm 4 TB: 78 x 109 x 19,5 mm
Enclosure	Matt

Product Range

Part number	Capacity	Color
HDTB540EK3CA	4 TB	Black
HDTB520EK3AA	2 TB	Black
HDTB510EK3AA	1 TB	Black

Logistical Information:

Box dimensions	111 x 38 x 141 mm
Box weight (gross)	1 TB, 2 TB: 250 g 4 TB: 304 g
Master carton dimensions	123 x 205 x 165 mm
Master carton weight (gross)	1 TB, 2 TB: 1.36 kg 4 TB: 1.67 kg
Boxes per master carton	5
Pallet dimensions	1150 x 1150 x 130 mm
Pallet weight (net)	27 kg
Units per pallet	1350

Contact

Toshiba Electronics Europe GmbH

Hansaallee 181
40549 Düsseldorf
Germany